

BMW N20/N54/N55 BOOST TAP

SNO-40200

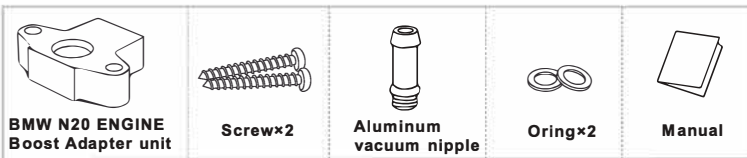
INSTRUCTION MANUAL

Welcome

Thanks for purchasing the BMW N20/N54/N55 ENGINE Boost Tap, please read the manual completely before installation!

Contents

The following pictures may be different from reality and are only for reference.



Features

- Designed for BMW N20/N54/N55 engine.
- Installs without cutting to maintain a completely factory appearance.
- Made of Aluminum.
- Anodized finish.
- Easy to install.

Importance

- Please read instructions completely before installing.
- It is highly recommended to consult professionals or a shop to do the installation if you are not familiar with the engine bay.
- Damage or unexpected results due to incorrect installation is out of the product liability. Any loss of personal or property due to incorrect usage is out of our liability of responsibility or compensation.
- Operate/install this product in a well ventilated space to avoid carbon monoxide poisoning.
- Please turn off the engine off at least 1 hour before installation to ensure safety and avoid a check engine light when disassembling any parts.
- Please do not rework, disassemble or modify any part of this product.

Notice

Wait at least one hour to make sure the engine is cooled enough to avoid injury by engine parts that are at a high temperature.

Wear safety gloves to prevent heat related injuries.

This product is only for BMW model with N20/N54/N55 engines.

Installation

The preparation before installation

Turn Off the engine



Open the engine hood

wait for at least 1 hour



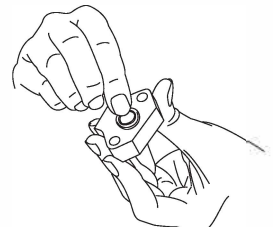
Start to install

①



Seal the threads of the vacuum nipple with sealant tape

②



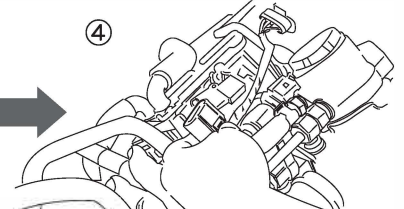
Install O-rings on the adapter unit

③



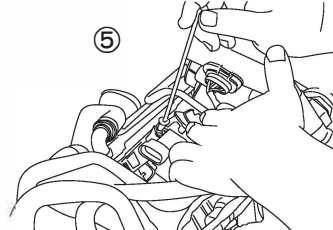
Screw the vacuum nipple into the bottom of the adapter

④



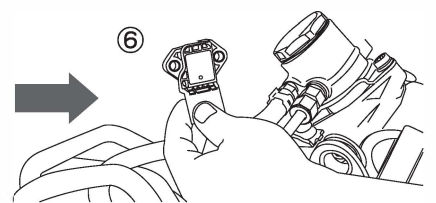
Unplug the pressure sensor connector

⑤



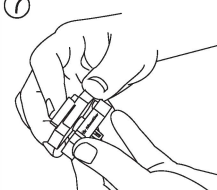
Remove the sensor bolt

⑥



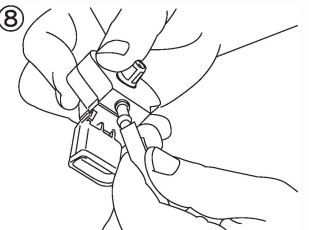
Remove the sensor

⑦



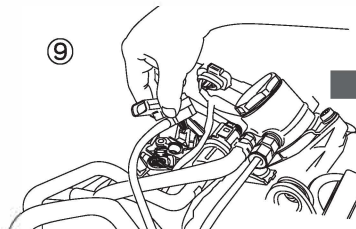
Assemble the boost adapter and sensor

⑧



Install silicone hose onto the vacuum nipple

⑨



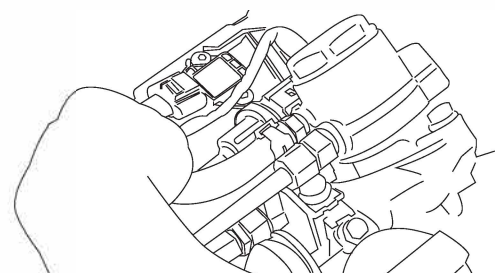
Re-install the sensor and boost adapter

⑩



Re-install sensor bolts

⑪



Plug in sensor connector